

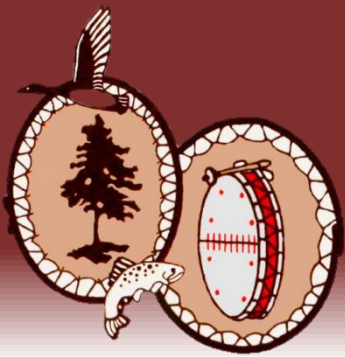
Forestry and Protected Areas in Eeyou Istchee

INSTEAD meeting
June 9, 2014, Montreal

Presented by:

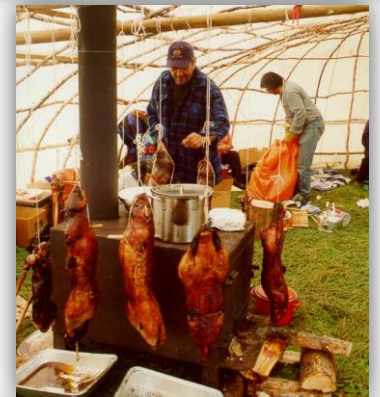
Christopher Beck (Cree Nation Government/Grand Council of the Crees E.I.)





Background

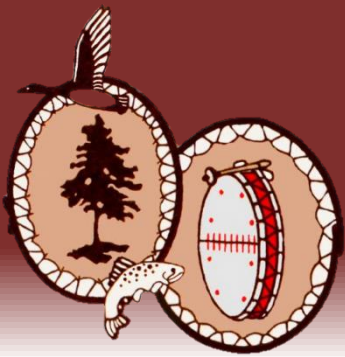
- “Eeyou Istchee” is the traditional territory of the Crees of northern Quebec. The term means “the land of the Eeyou/Eenou (the people)”. The Crees have lived in this homeland for thousands of years
- More than 18,000 Crees, with 16,000 residing in nine Cree communities. A tenth community is in the process of being established
- Cree traditional territory covers 400,000 km² (two-thirds the size of France). Whole territory is used by the Crees for traditional activities of hunting, fishing and trapping





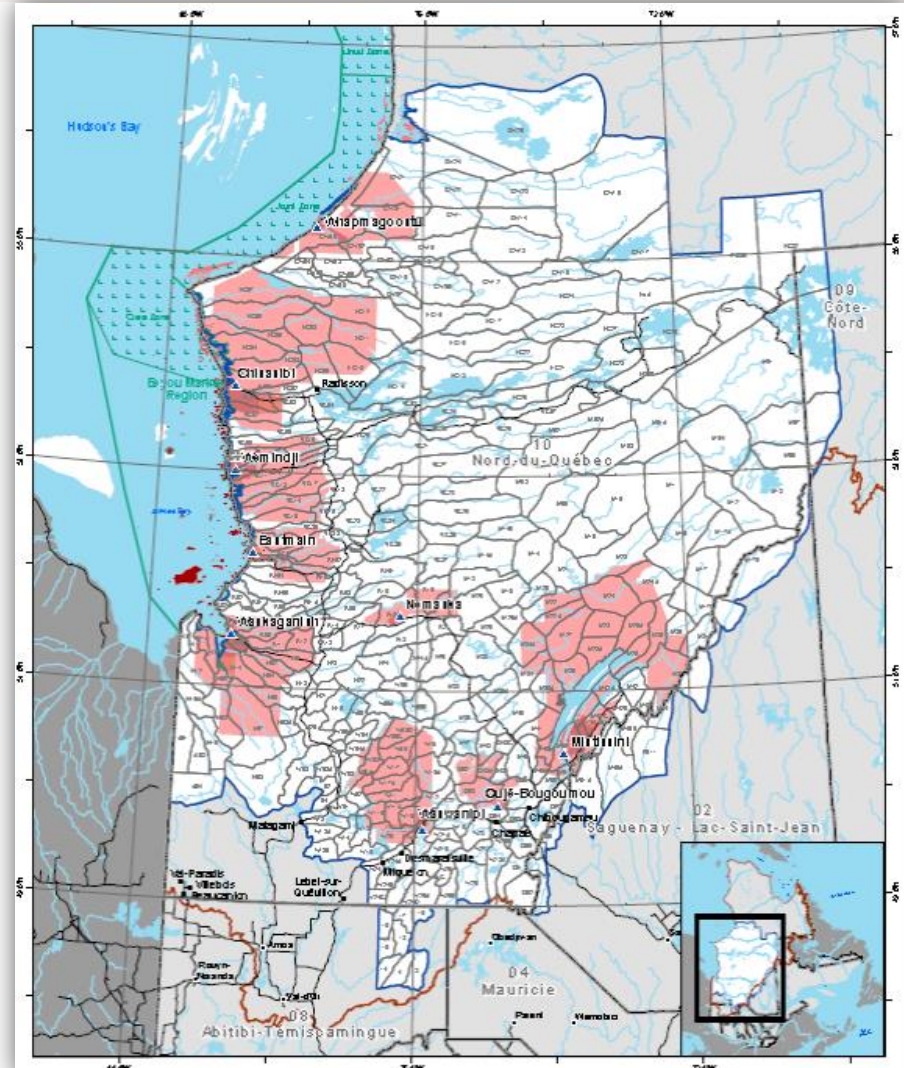
Eeyou Istchee: The People's Land

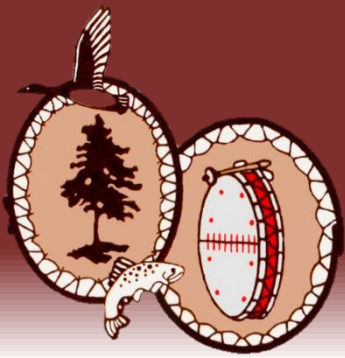




Background

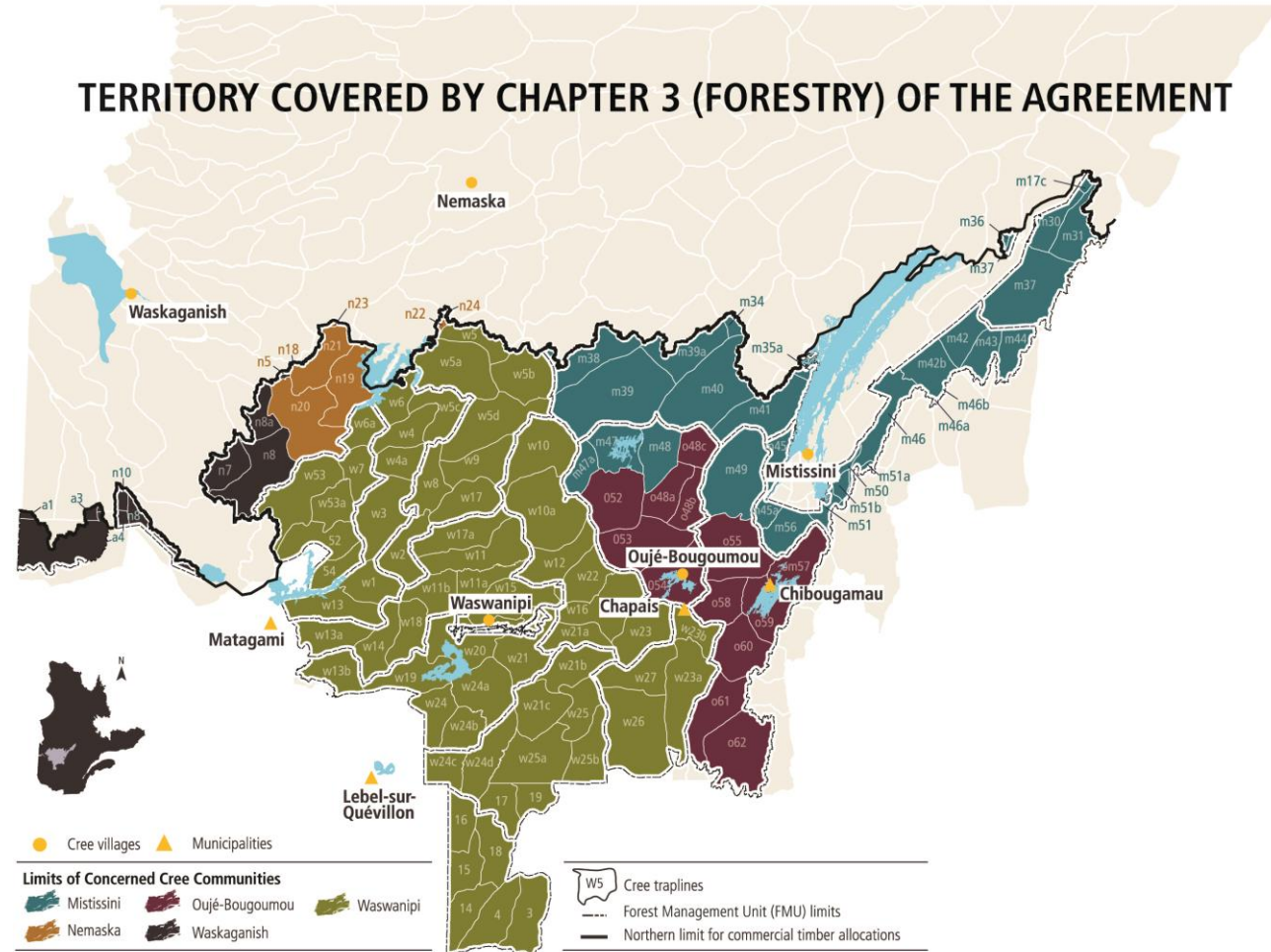
- Located between 48th and 56th parallels in northern Québec, in boreal and taiga ecozones
- More than 300 traplines (family hunting territories)
- Hundreds of mining claims, several major mine projects
- Major impacts from hydroelectric development since early 1970s

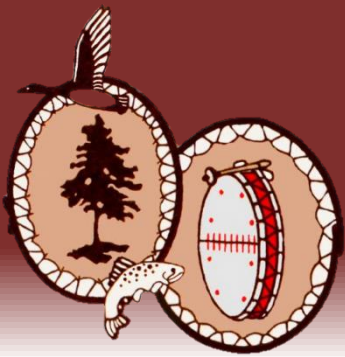




Forestry

- Over 70,000 km² of forestry development
- More than 2,000,000 m³ of wood harvested per year
- +15,000 km of roads
- 5 Cree communities (125 traplines) affected by forestry
- 16,000 non-Crees live in a small number of resource-based towns in this area

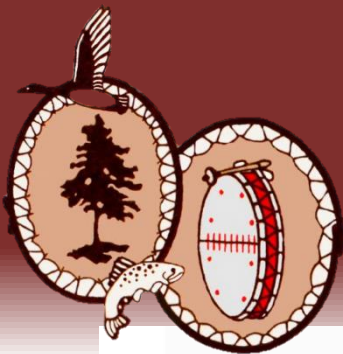




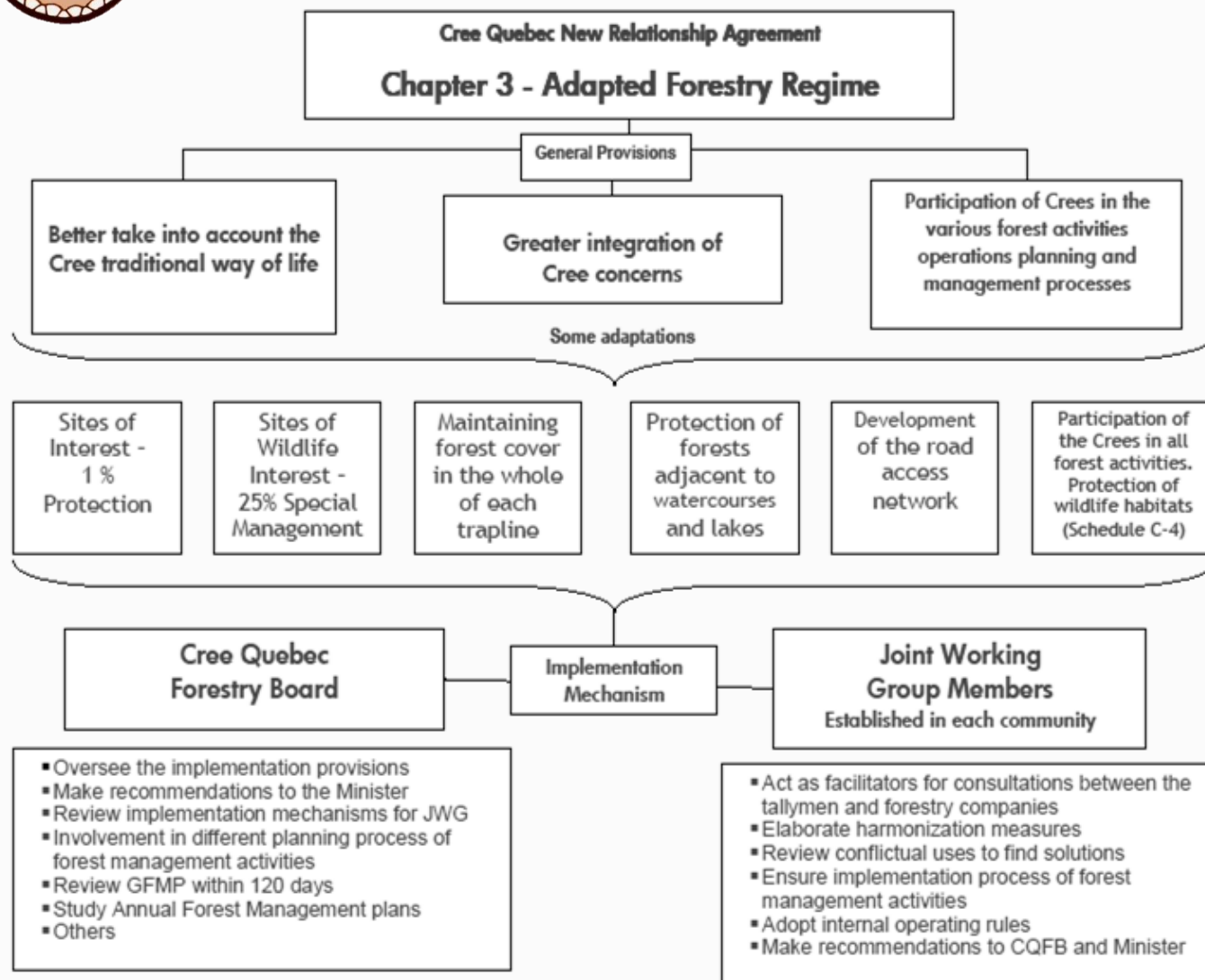
Forestry

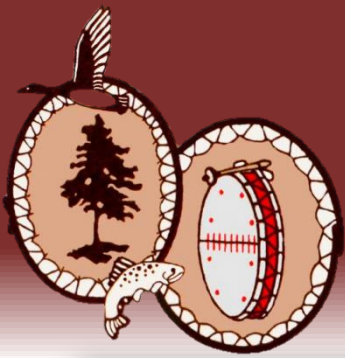
- In 2002, the Crees signed the “New Relationship Agreement” with the Government of Québec. agreement has come to be known as the ***Paix des Braves***.
- Chapter 3 of the agreement created an “**Adapted Forestry Regime**” with provisions for the improved **harmonization of forestry activities with the Cree traditional way of life**
- Provides for **special management standards** including mosaic cutting and minimum forest cover requirements, and **areas of special interest** for wildlife, to maintain the habitat of key species such as moose, beaver, fish and caribou





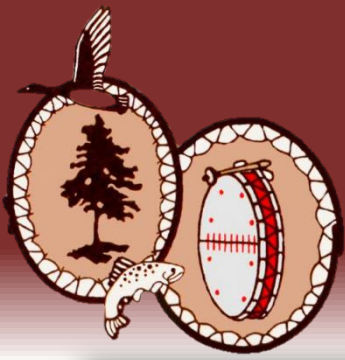
Forestry





Forestry

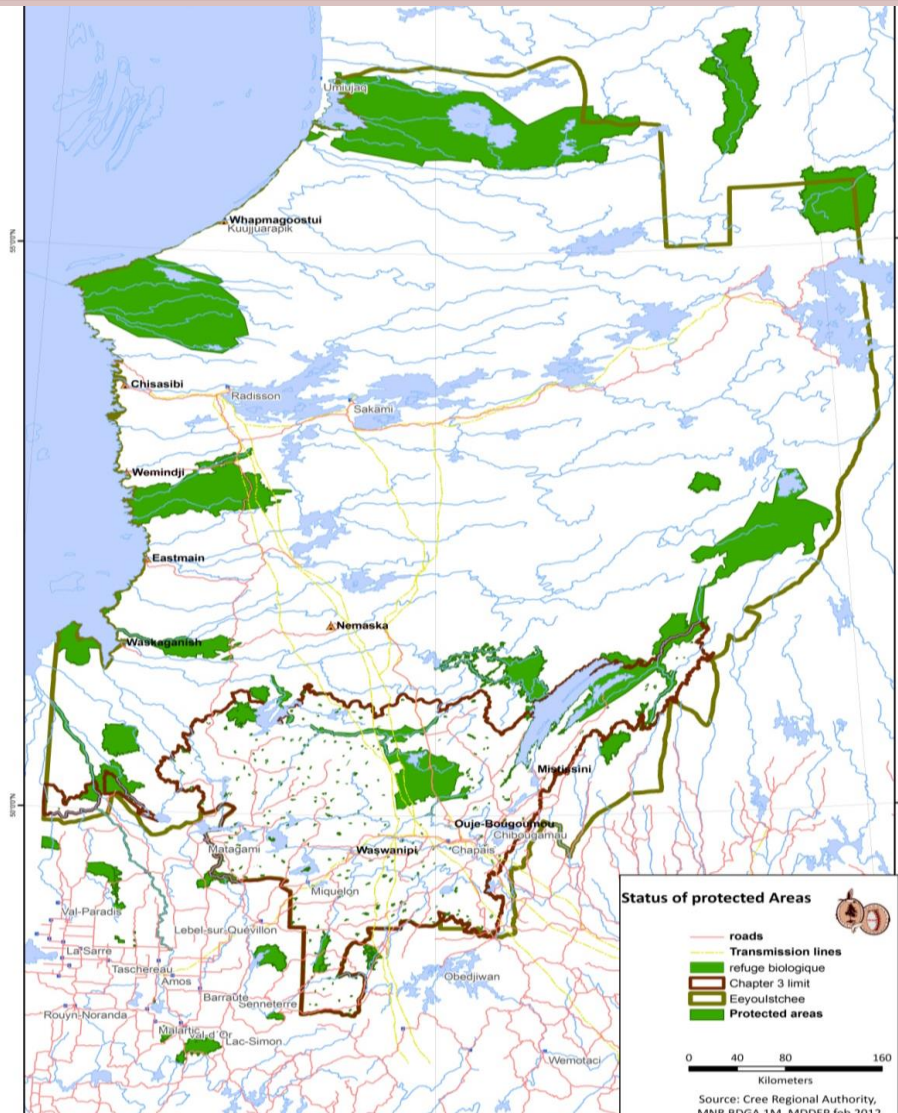


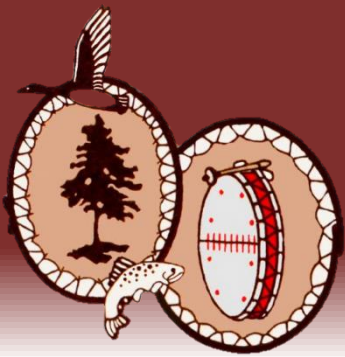


Forestry consultation meetings



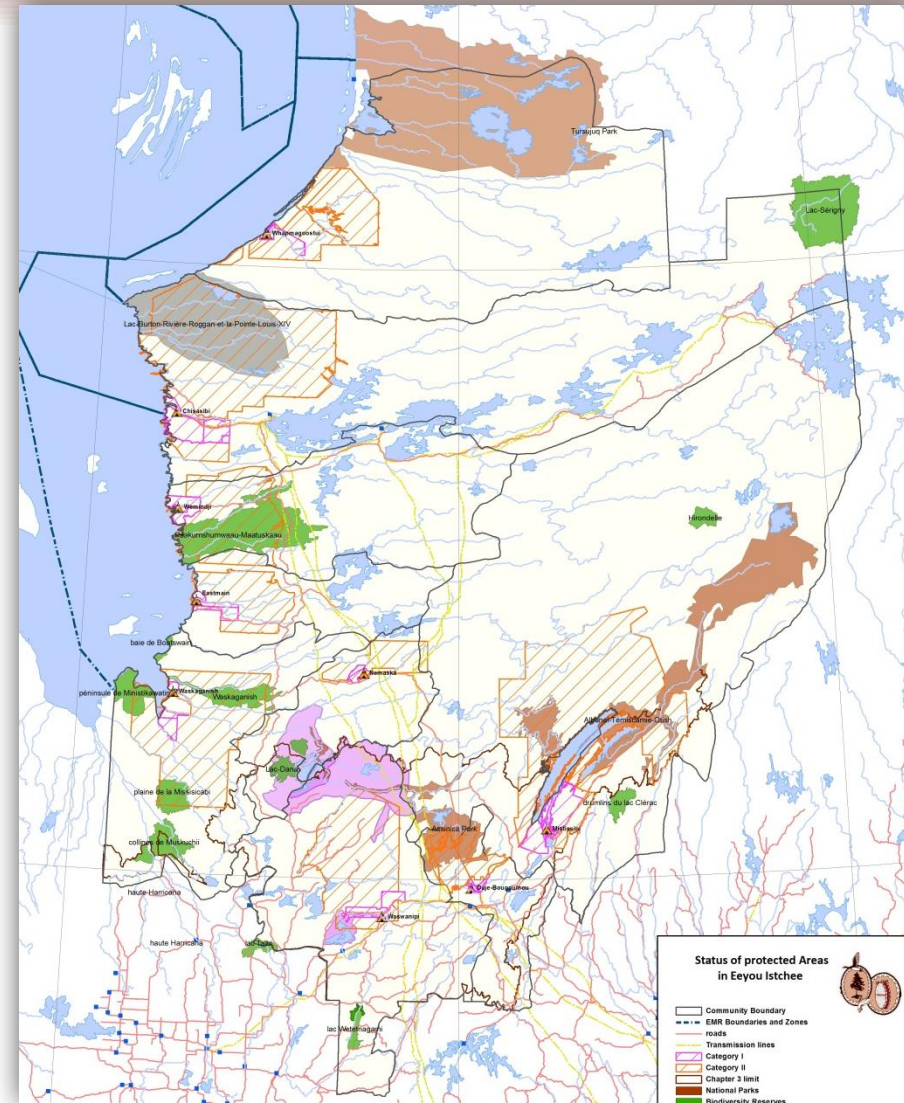
Protected areas in Eeyou Istchee





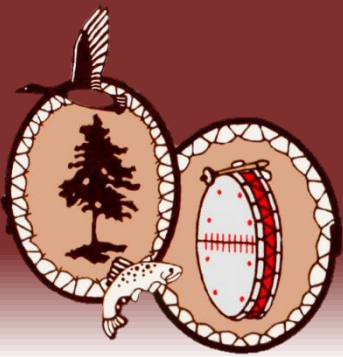
Protected areas

- Designation of lands that are protected from industrial development has been increasing in Eeyou Istchee since 2003
- Some of the areas were developed and proposed by Cree communities, others were established by the Quebec Government without adequate consultation and input from the Crees



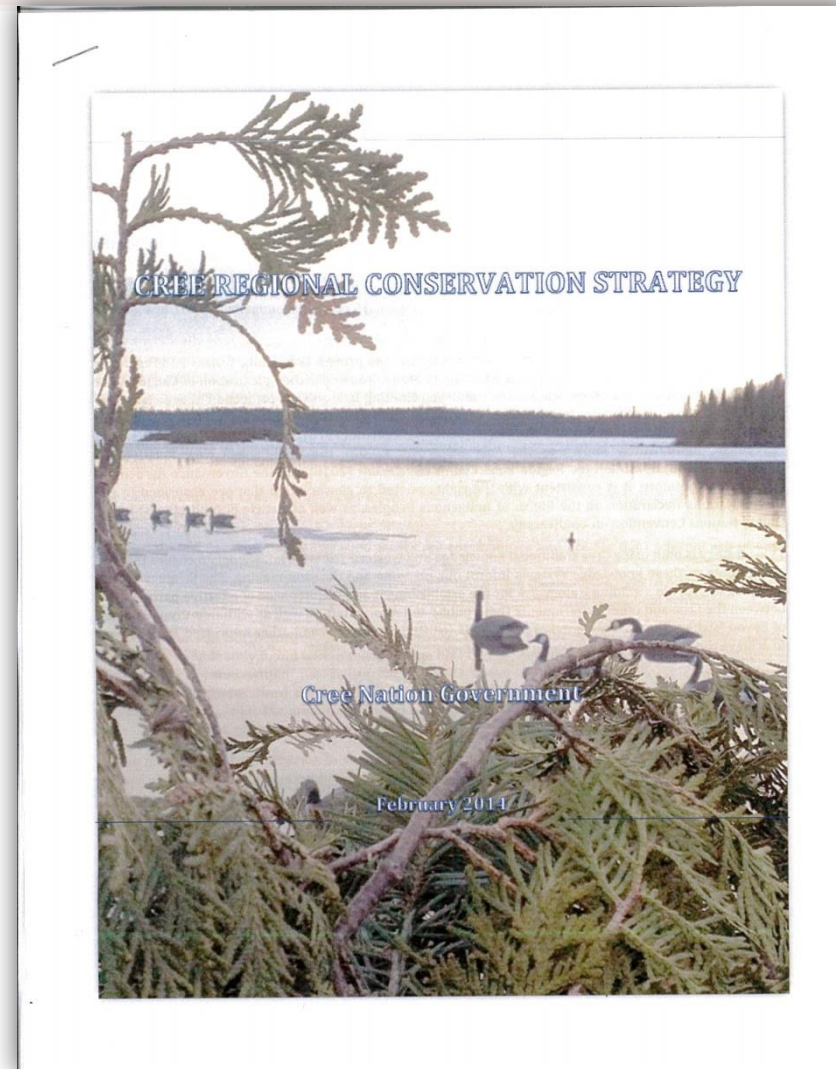
	Ecological Reserves	Parks	Biodiversity Reserves	Wildlife Reserves
Education				
Research				
Sport Fishing				
Sport Trapping				
Sport Hunting				
Camping				
Forestry				
Mining				
Hydro				

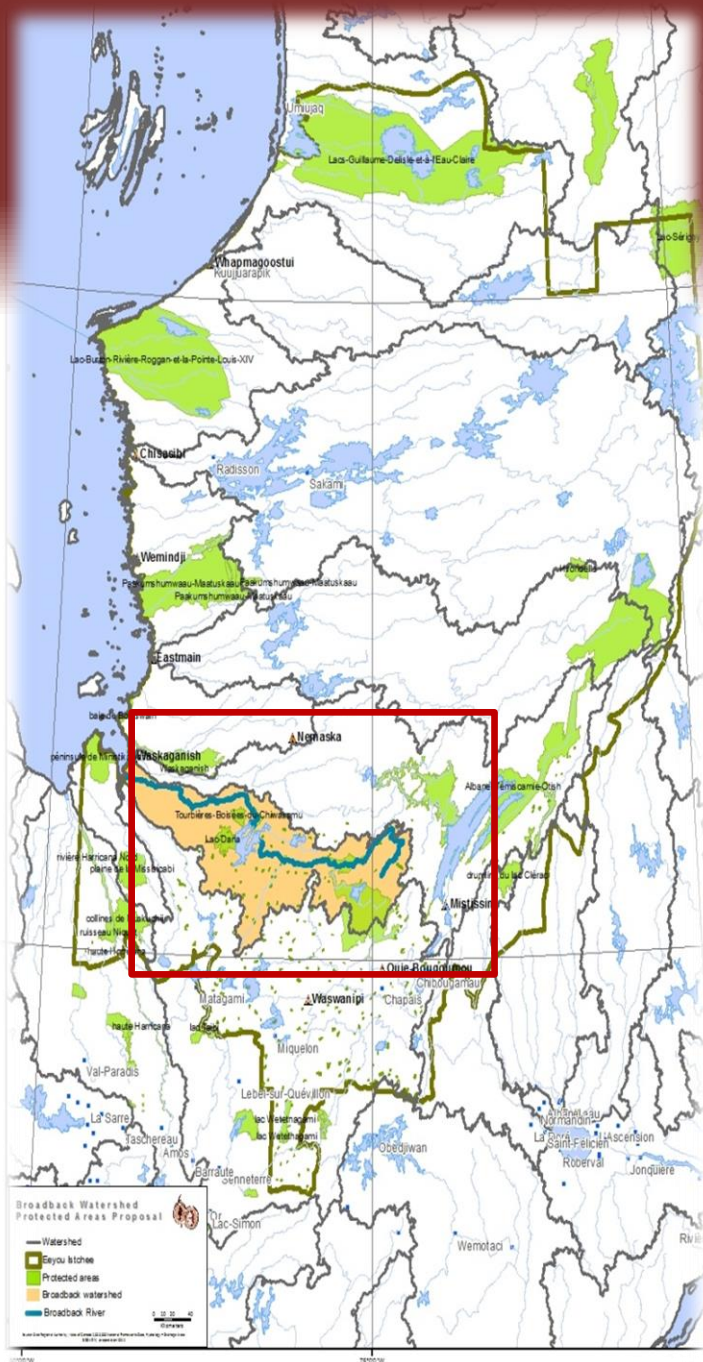
Prohibited	
Allowed	



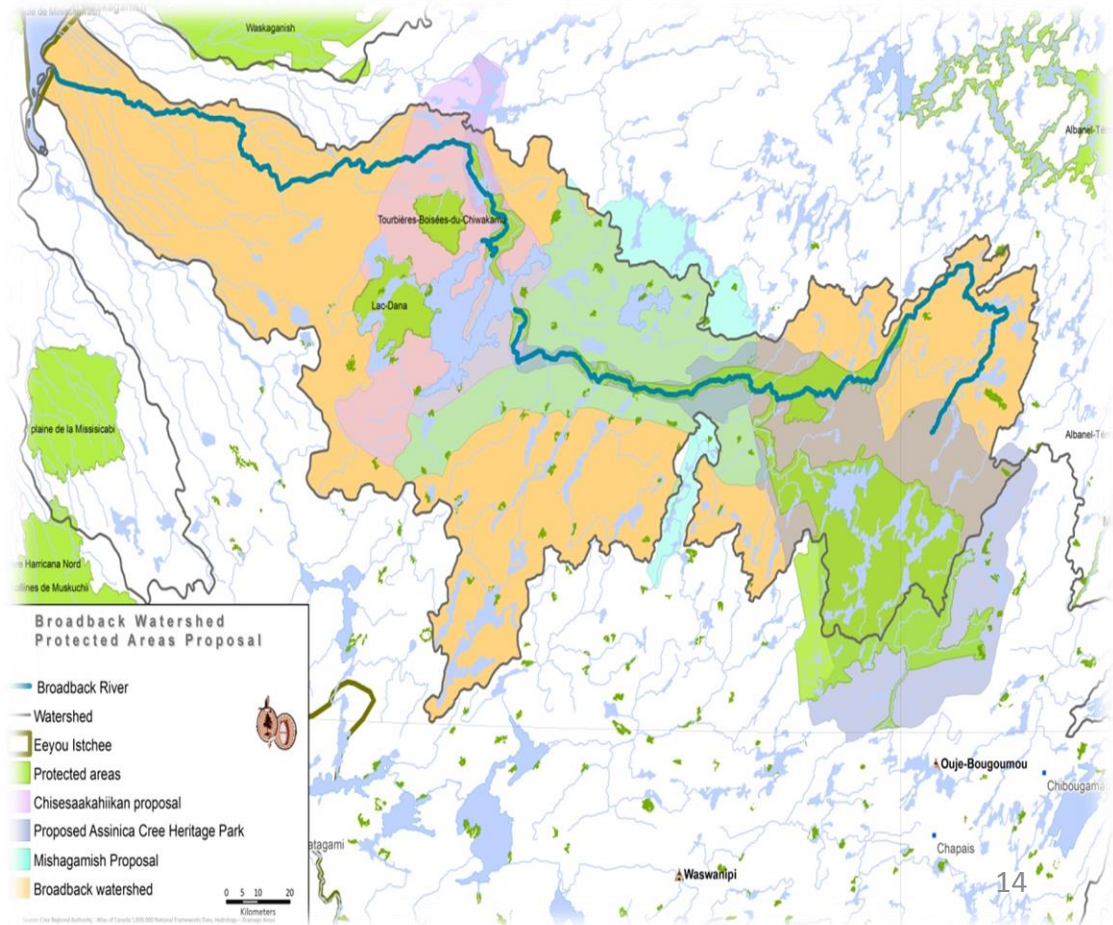
Protected areas

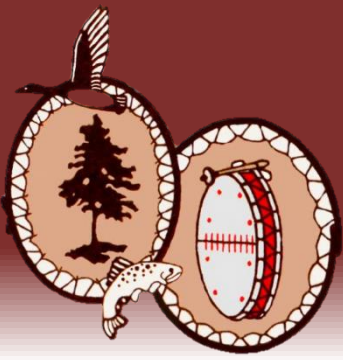
- The Cree Nation has developed the **Cree Regional Conservation Strategy**
- Main goal of the strategy is to create an interconnected network of conservation areas in Eeeyou Istchee, in order to safeguard the Cree way of life and sustain biodiversity
- Wildlife conservation and food security are key elements
- Aim is to ensure full Cree participation in conservation areas planning and management
- The best of Cree knowledge and conservation science is being used in this process





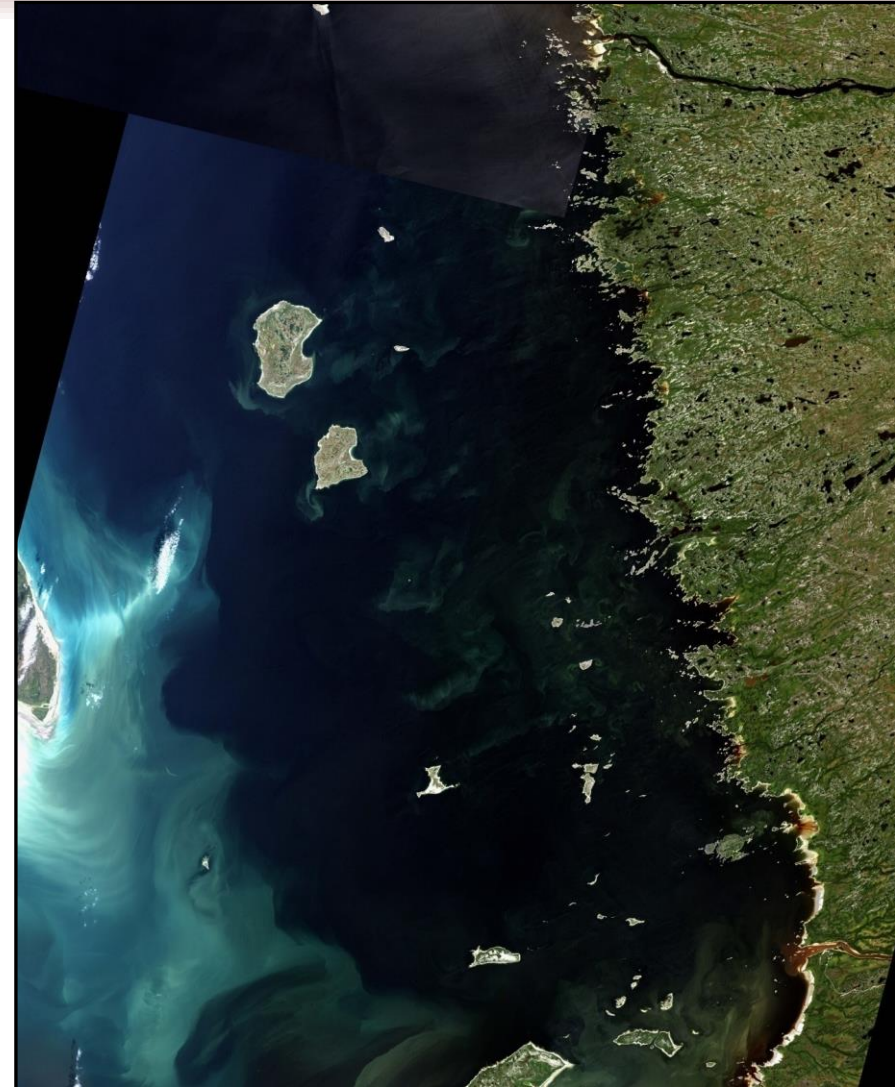
Broadback Watershed Conservation Plan

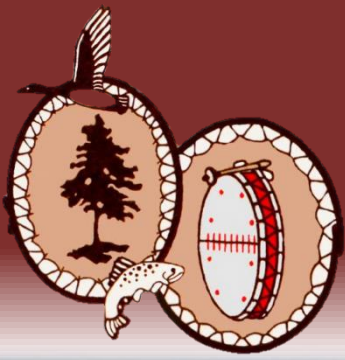




Protected areas

- **Marine Region Protected Areas**
- Tawich Marine conservation Area was developed in Wemindji and proposed to the Federal Government in 2009
- Eeyou Marine Region Lands claims agreement. Implementation of this agreement involves land use planning, and the creation of protected areas. Implementation structures/staffing is currently being put in place





Meegwetch!

Thank you!